

MONUMENT RECORD  
State of Indiana - County of Monroe

Section: 34

Township: 8 North

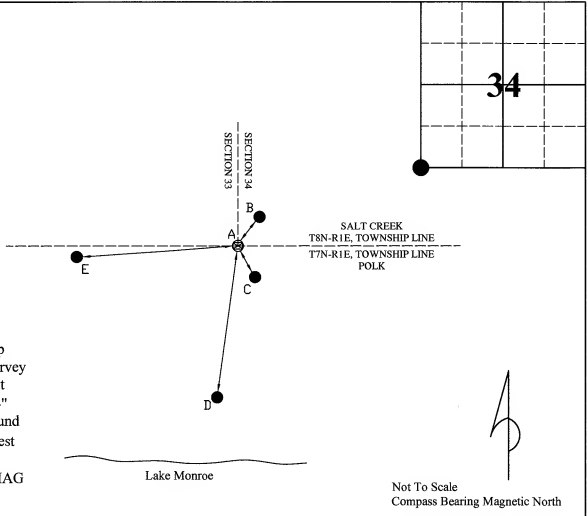
Range: 1 East

Corner ID: SaCr M-25

**Monument Description & Remarks:** 5/8" Rebar with cap, "SNA INC L.S. 29500020". Survey Sign 2ft above ground at pt. B

**References On File:** Stephen L. Smith survey, Shawnee Bluffs Estates Subdivision (2008), on file in Recorder Office cabinet D, envelope 77

RECOVERY TIE DRAWING  
Field Book 43 Page No. 61



- A - 5/8" Rebar with cap
- B - N 14° E 6.25' to Survey Sign on 1/2" Rebar Post
- C - S 14° E 7.13' to 3/4" Iron Pipe 4" above ground
- D - S 20° W 38.3' to Nest Box in dead tree
- E - S 90° E 32.35' to MAG nail in 18" White Oak

I, Kevin P. Enright, Monroe County Surveyor, hereby certify that this document was prepared under my direction in accordance with the provisions of section 36-2-12-11 of the Indiana Code; and the above data is given under my hand and seal this 17th day of March, 2010.

*Kevin P. Enright*



Administered by the Monroe County Surveyor Review Board

Date: 12/14/2010